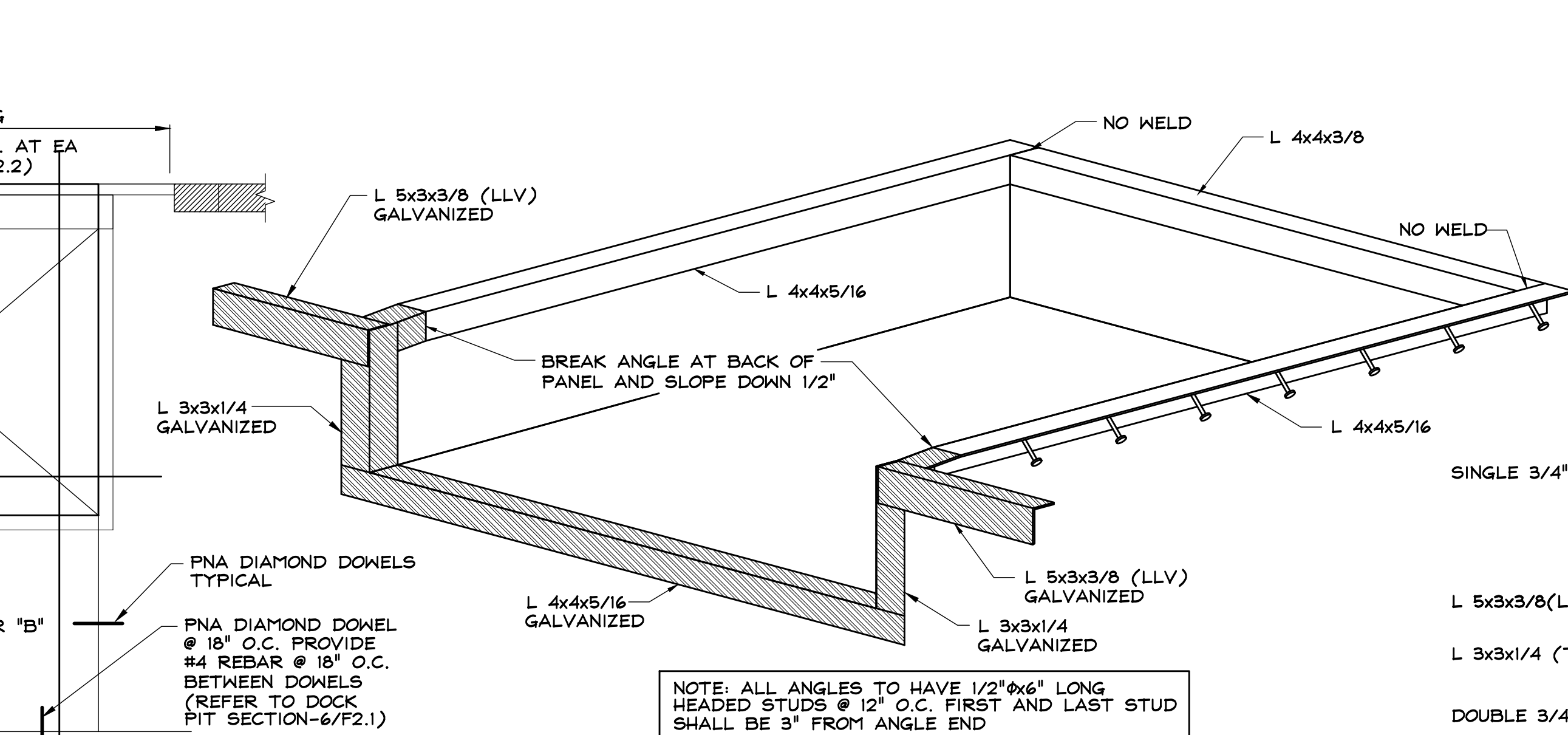
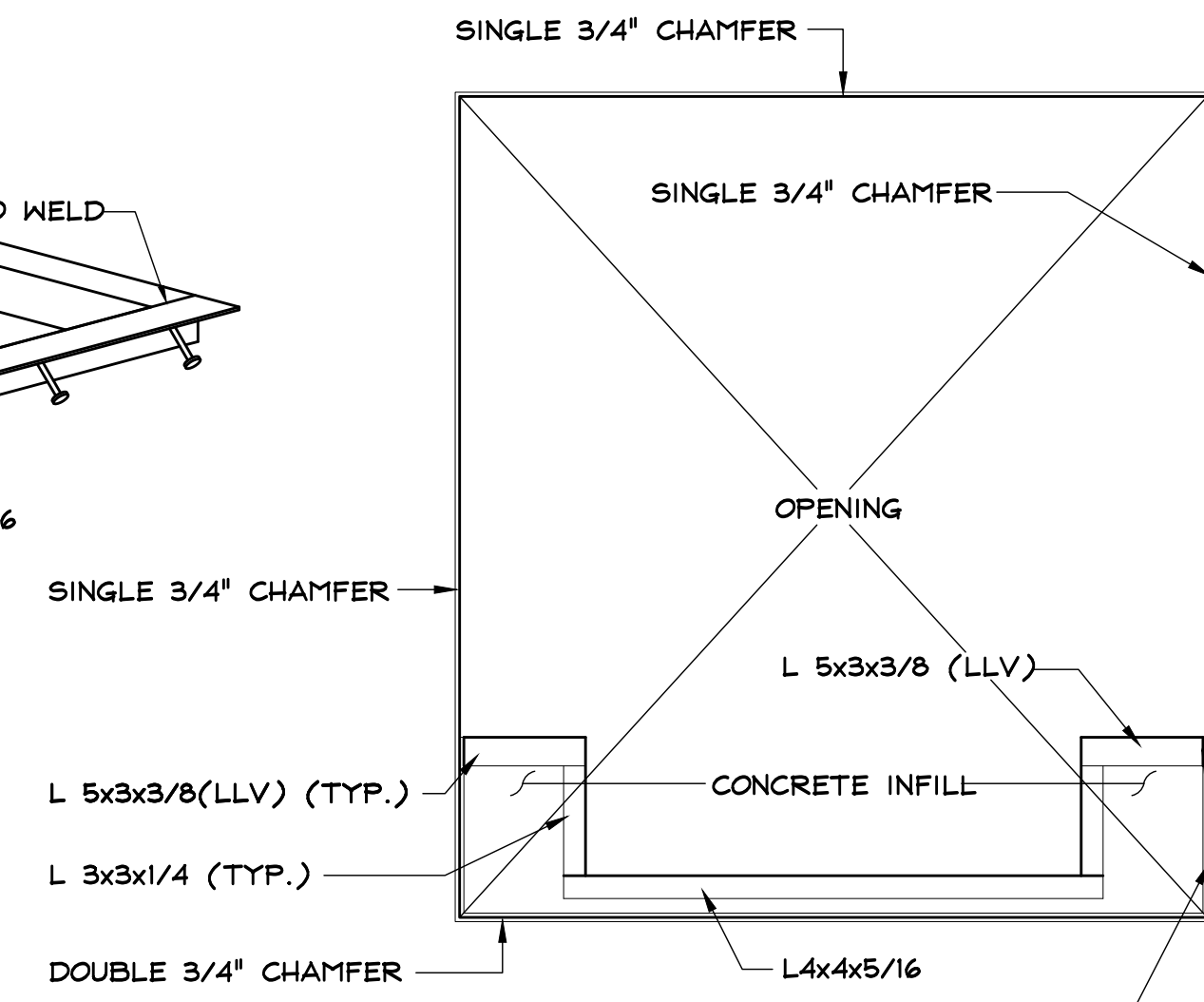


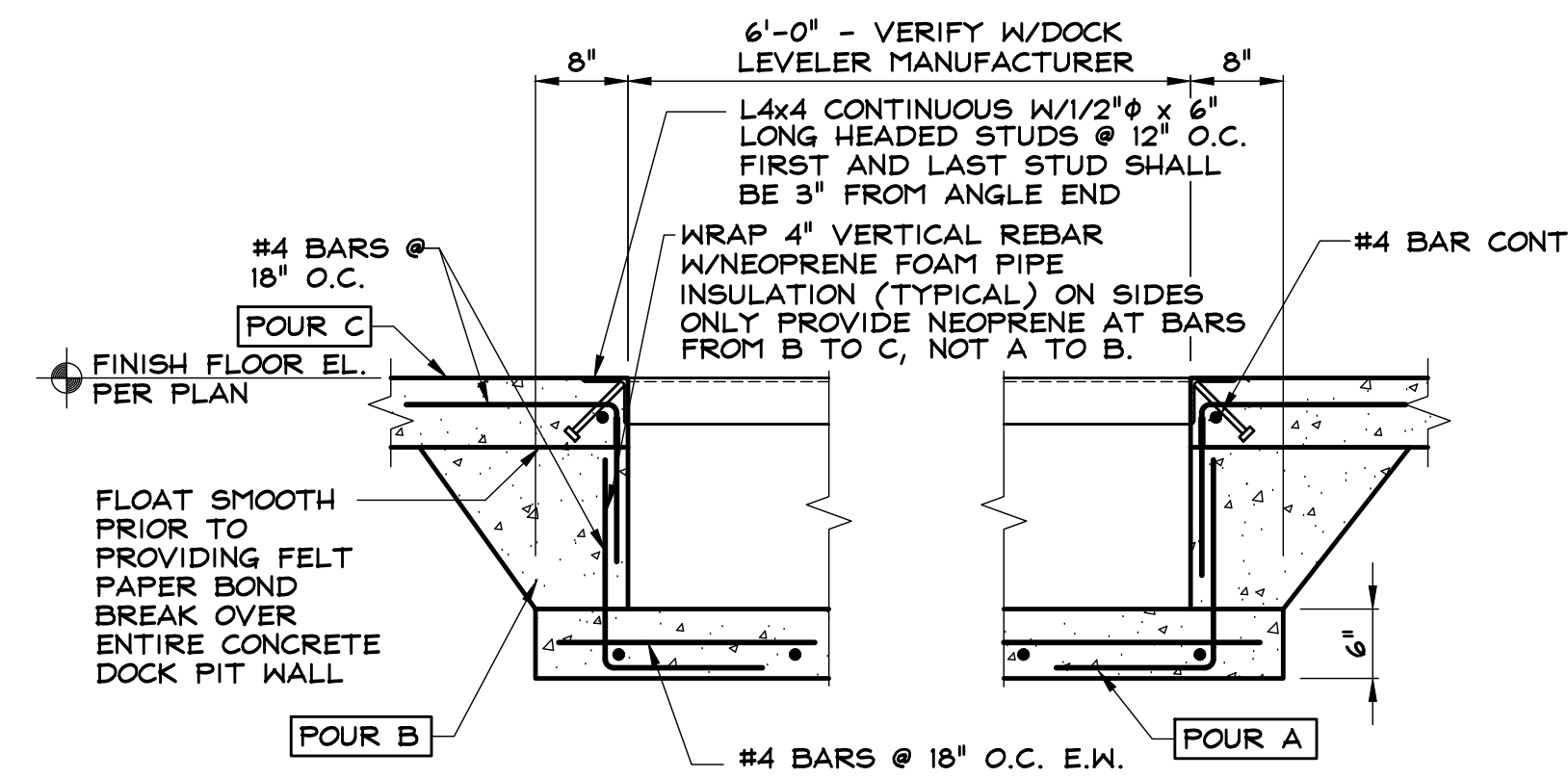
SECTION 1
SCALE: 3/4" = 1'-0"
(ARCO DETAIL SI.1- DOCK PIT PLAN VIEW 11/12/18)



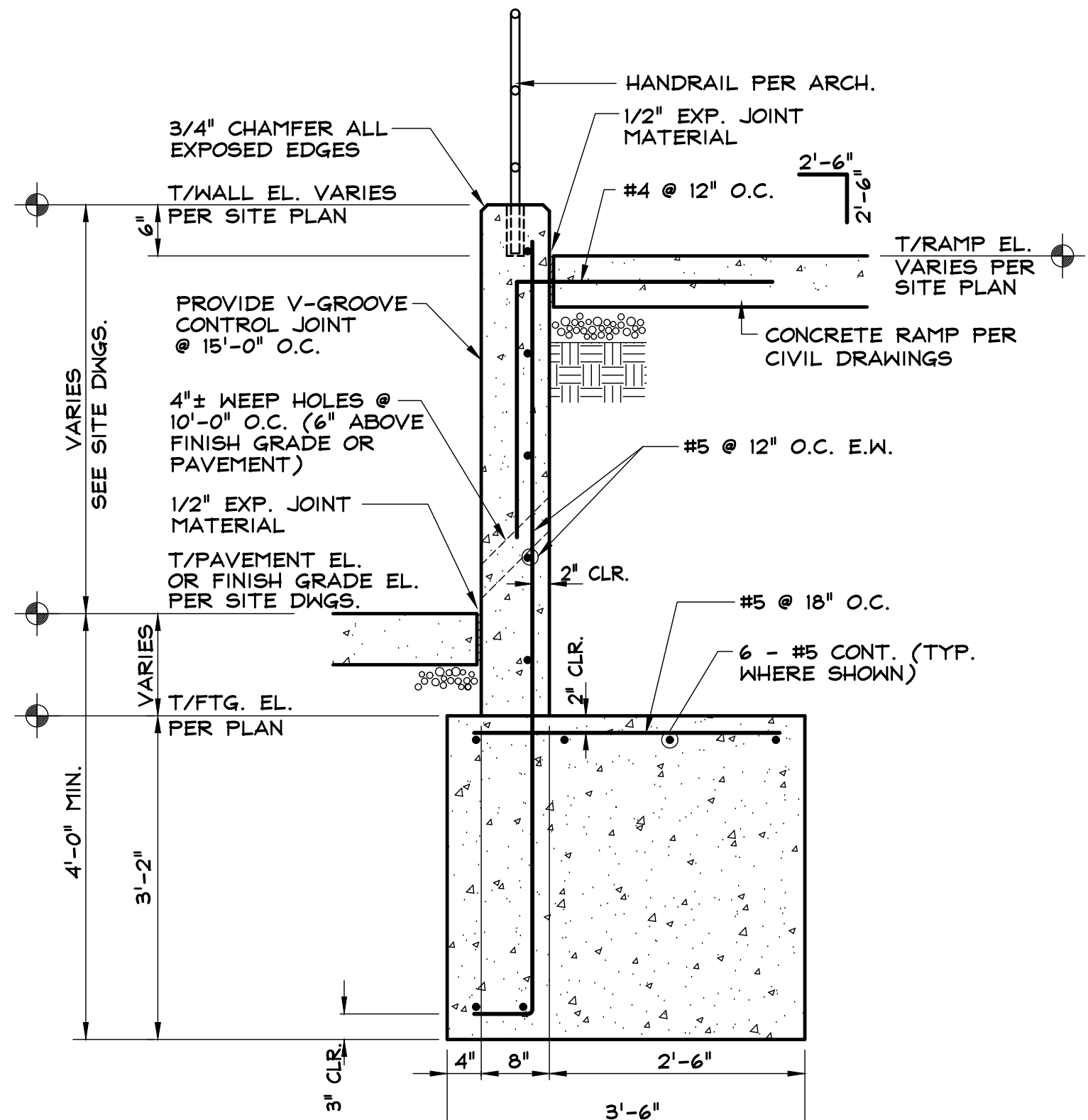
SECTION 2
SCALE: 3/4" = 1'-0"
(ARCO DETAIL SI.2- DOCK PIT ISOMETRIC 11/12/18)



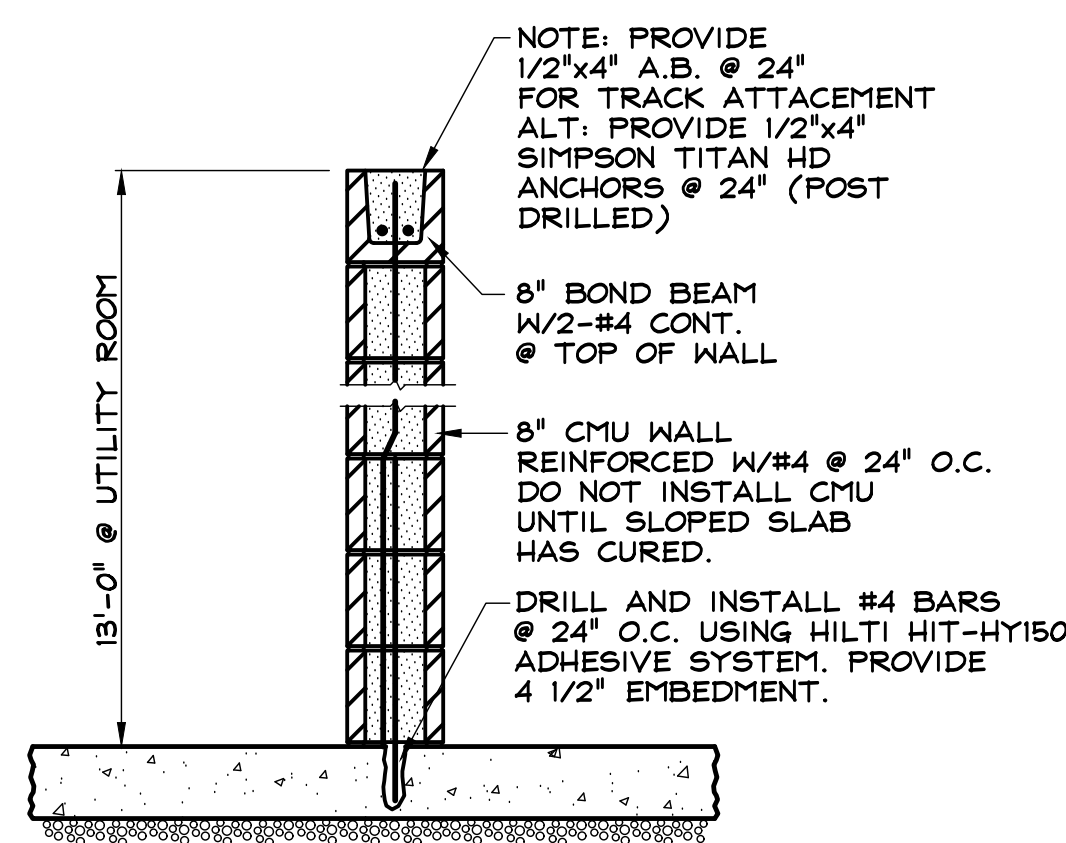
ELEVATION 3
SCALE: 3/4" = 1'-0"
(ARCO DETAIL SI.5- DOCK PIT ELEVATION 11/12/18)



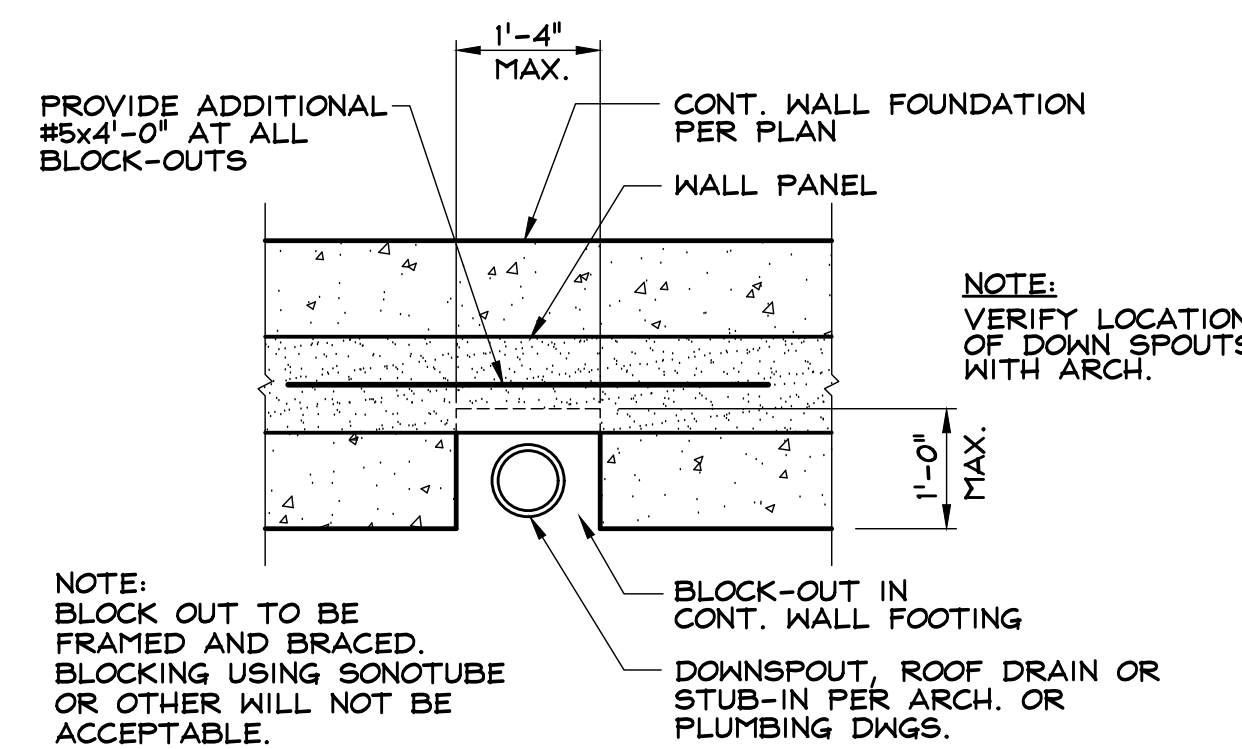
SECTION 4
SCALE: 3/4" = 1'-0"
(ARCO DETAIL SI.4- DOCK PIT CROSS SECTION 11/12/18)



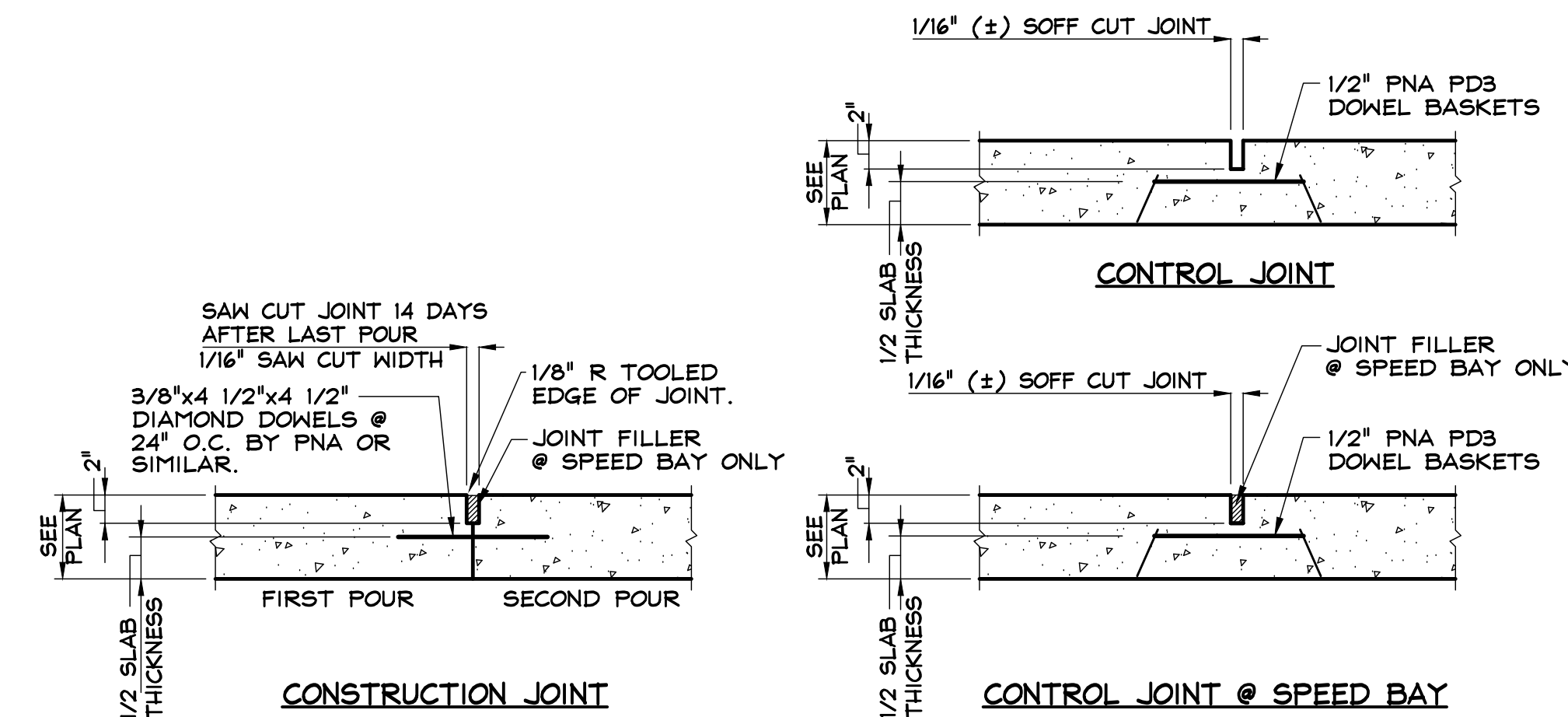
SECTION 5
SCALE: 3/4" = 1'-0"
(ARCO DETAIL SI.7- DRIVE IN RAMP WALL 11/12/18)



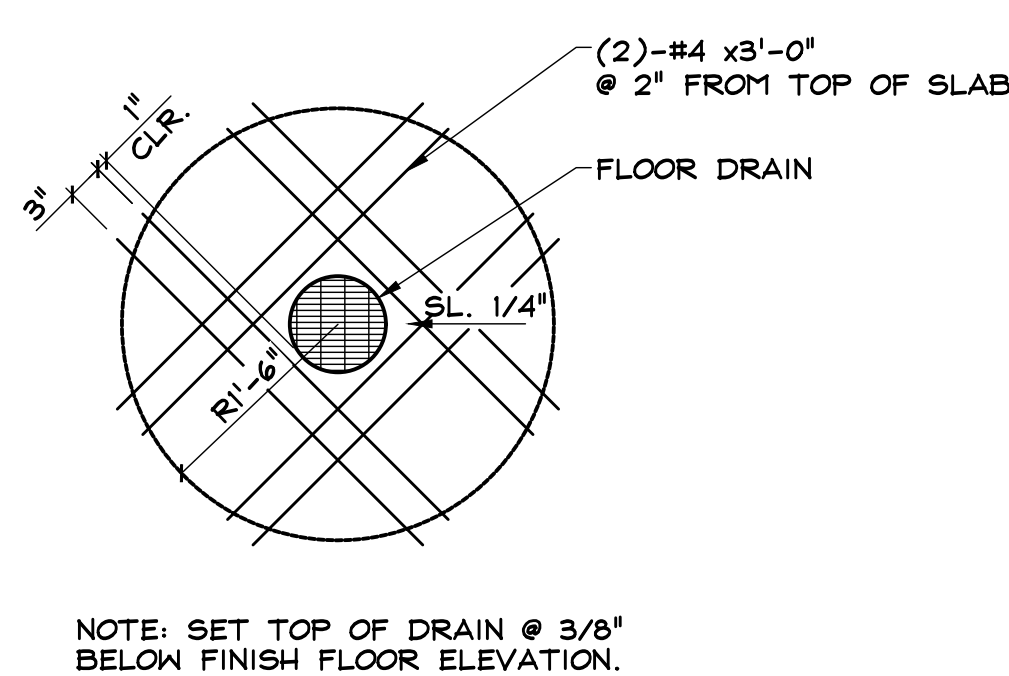
TYPICAL DETAIL @ INTERIOR MASONRY WALLS
NO SCALE
(UTILITY / ELECTRICAL ROOM)



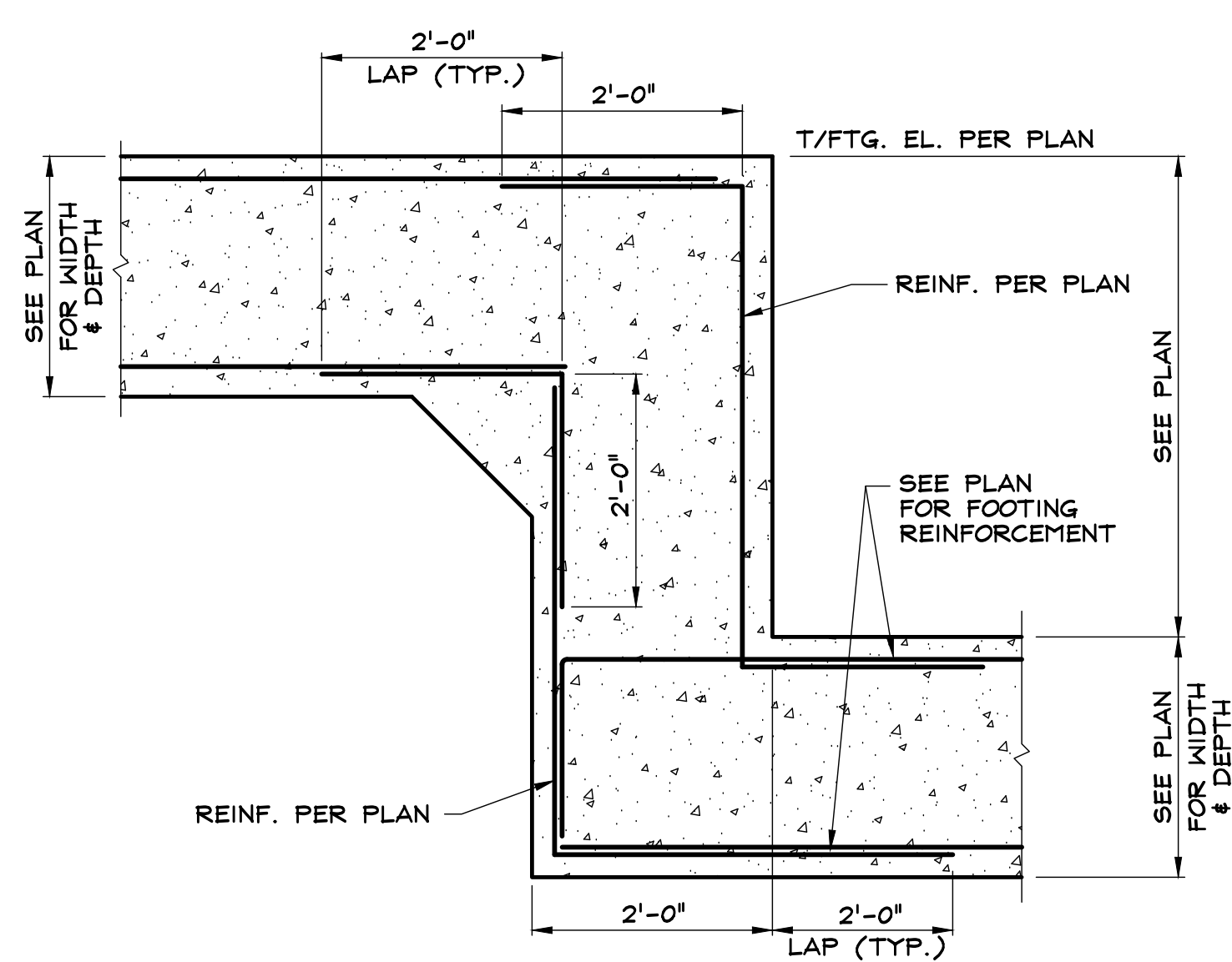
TYPICAL DOWNSPOUT, ROOF DRAIN AND UTILITY BLOCK-OUT PLAN
SCALE: NONE



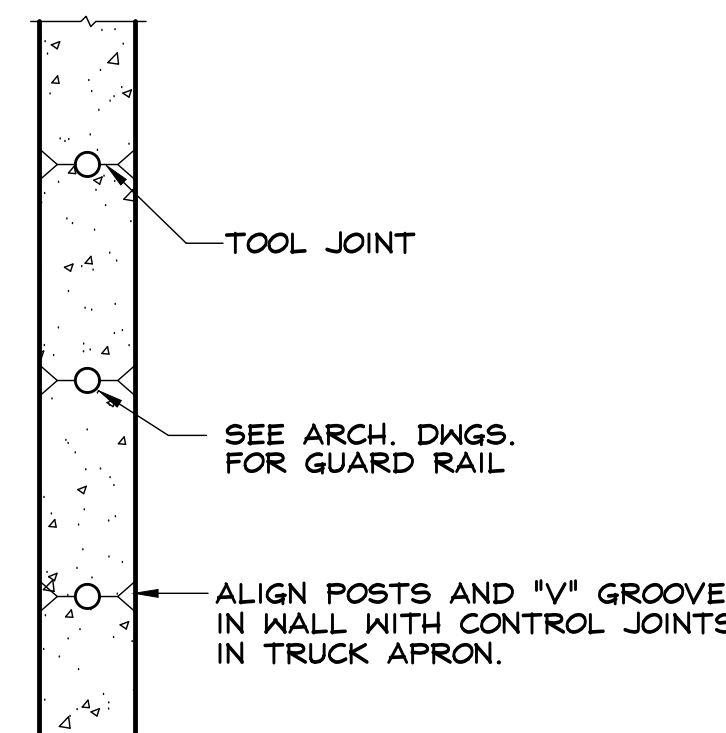
WAREHOUSE SLAB SLAB ON GRADE JOINTS
SCALE: NONE
(ARCO DETAIL SI.16)



RE-ENTRANT REBAR @ FLOOR DRAINS & BOLLARDS
SCALE: 3/4" = 1'-0"
(ARCO DETAIL SI.17)



TYPICAL STEPPED FOOTING
SCALE: NONE



TYP. PLAN VIEW OF TOP OF RAMP WALL
SCALE: 3/4" = 1'-0"
(ARCO DETAIL SI.8 TYP. PLAN VIEW OF RAMP WALL 11/12/18)

DESIGNER / BUILDER

ARCO

DESIGN/BUILD INDUSTRIAL

44 SOUTH BROADWAY, SUITE 1003
WHITE PLAINS, NY 10601
P: 914.821.5535 F: 914.306.8010

PROJECT TITLE

LINCOLN EQUITIES - NY-131- BLDG A

NY-312 & PUGSLEY RD, SEVENTEENTH, NY 10509

ARCHITECT

ADBI / DESIGN SERVICES LLC
44 SOUTH BROADWAY, SUITE 1003
WHITE PLAINS, NY 10601

CIVIL ENGINEER

LANGAN ENGINEERING
300 KIMBALL DRIVE
PARSONS PARKWAY, NJ 07054

STRUCTURAL ENGINEER

SMITH ROBERTS AND ASSOCIATES, INC.
6501 BLUFF RD.
INDIANAPOLIS, INDIANA 46217

MECHANICAL ENGINEER

NATIONAL DESIGN/BUILD SERVICES
11840 BORMAN DRIVE
ST. LOUIS, MO 63146

ELECTRICAL ENGINEER

FXB ENGINEERING
5 CHRISTY DRIVE, SUITE 307
CHADDS FORD, PA 19317

PLUMBING ENGINEER

MCCARTHY ENGINEERING ASSOCIATES, INC.
315 EAST SECOND STREET
BOYERTOWN, PA 19512

FIRE PROTECTION ENGINEER

S A COMUNALE CO. INC.
2900 NEWPARK DRIVE
BARBERTON, OH 44203

SEAL

THOMAS G. SMITH | NY: 042283

KEY PLAN

TRUE NORTH PROJECT NORTH

SUBMITTALS

NO.	DATE	DESCRIPTION
12.08.21	PROGRESS	
1.28.22	PROGRESS	
2.28.22	95% PROGRESS	
3.9.22	100% PROGRESS	
5.24.22	PUMP HOUSE	
6.9.22	PERMIT	
1	7.8.22	FTG STEPS & JOIST SEAT @ A

PROJECT NO.

AS286-21 | NY131 | 21-154

DRAWN BY

DTC

SHEET TITLE

FOUNDATION DETAILS

SHEET NO.